

Sika·Design®

HANDMADE FURNITURE



Affaire

SIKA-DESIGN

A PROUD TRADITION OF CRAFTSMANSHIP

Our passion for and understanding of rattan dates back decades. We have been around long enough to call ourselves Scandinavia's oldest producer of rattan and wicker furniture.

The story of our company begins in 1942, when Ankjær Andreasen produced the first batch of baskets, lamps, flower tables and other smaller interior items made of rush and willow. In the 1950's, Ankjær expanded his production to include a series of furniture made from rattan, and the company Sika-Design was firmly established.

The rattan was imported from the Far East, and Ankjær travelled there to purchase the rattan for his wicker makers in Denmark. During a trip in 1972, he was so impressed by the skilled wicker makers that he decided to establish a wicker furniture factory in Malaysia. Since then, the Far East has been essential to our production of furniture. Today, we manufacture our furniture in our own factory in Indonesia. Ankjær's son, Knud Andreasen, took over the company in 1983, however Ankjær continued his daily "inspections" until his death in 1997. On my 10th birthday, my father allowed me to attend a fair where Sika-Design was exhibiting a series of rattan furniture.

On that day, I knew I wanted to be a part of his company, and my passion for rattan furniture began. Since 1996, my father and I have worked side by side bringing Sika-Design into the new century with great design, while never letting go of our strong heritage of great craftsmanship.

Sika-Design respects human rights and complies



with the SA8000 standard for social accountability, and we demand the same commitment from our suppliers. Products from Sika-Design are developed and marketed in accordance with our management system for environment and social responsibility ISO 14001/2004 and SA8000/2008. Certified by Bureau Veritas Certification.

AFFÄIRE

The Affaire collection is a combination of the amazing natural resource, rattan and the fantastic man-made synthetic fibre. The frames are made of rattan and the woven seats and backs, and the bindings are all made of polystrand synthetic fibre. The designs in this collection are our own, and some of them date back to the 50'ties and 60'ties, and you will find some of the same in our Originals collection.

Affaire is designed for the upper end cafés, brasseries and restaurants in historical European cities and capitals all over the world.

Affaire is also an elegant choice for Riviera's along waterfronts all over the world. Our handcrafted Affaire café chairs, stools and tables bring you back to the atmosphere of Paris café life in the 30'ties.

ORIGINAL TEAK COLLECTION

To complement our collection of rattan items we have developed an original series of teak products. All our teak items are made of old reclaimed teak from old houses, fishing boats and railroad supports. The rustic teak items will appear with reparations and fillings and the general characteristic that old wood will have.

LOUISE ANDREASEN
3rd generation,
Sika-Design





3 GENERATIONS
WITH PASSION
FOR RATTAN



LOUISE ANDREASEN

(1971-)

Louise Andreassen is the 3rd generation to run Sika-Design. She has worked side by side with her father Knud since 1995 and took over the ownership of the company and role of CEO in 2015. Louise is very conscious about inheriting a special company with a strong company culture characterized by freedom with responsibility. She is determined to preserve and continue this culture created by her father and grandfather.

Louise has from a very young age been passionate about furniture production and interior design. Her strong footprint in the company has been insisting on creating furniture in the natural material rattan and educating the market and customers about its wonderful qualities. She loves to combine the light Scandinavian look with oriental details and materials. Louise adds a feminine touch to the decor and seeks to create a cosy ambience with her furniture.



KNUD ANDREASEN

(1948-)

Knud Andreassen took over his father's company in 1983. Over three decades, Knud has developed a strong worldwide distribution and made solid manufacturing partnerships in Indonesia and Malaysia. In 1989 he founded Sika Design's associated company Cane-Line A/S and in 1991, he acquired the Danish competitor Horsnæs and merged it with Sika. Knud was a pioneer when he introduced the game changing material ArtFibre on the European market in the late 1990s.

Knud has always insisted on great comfort and strength when designing and producing furniture. Especially furniture designed for hospitality has been one of Knud's core focus areas. He has always had an eye for practical details such as making sure the chairs are stackable.



ANKJÆR ANDREASEN

(1911-1997)

Ankjær Andreassen established the company Sika Møbler in 1942. He was a true entrepreneur at heart and had previously run a hotel, created an entire housing area and arranged spectacular motorcycle races. He was a man full of ideas and imagination.

In the beginning Ankjær home produced wicker baskets and lampshades and small pieces of rattan furniture, but the business quickly grew and in 1951 he established a cane and rattan manufacturing company on Funen. In 1972, Ankjær went on a trip to the far east and when he returned, he had bought a piece of land and established a rattan furniture production in Malaysia which quickly grew to 150 men.

RATTAN

A NATURAL & SUSTAINABLE MATERIAL

RATTAN AND ARTFIBRE

Rattan is a natural climbing plant that grows in the Indonesian rainforest. Rattan have been known to grow up to a hundred meters long. Rattan grows naturally without disturbing the existing structure and balance in the rainforest. Rattan is strong, lightweight, flexible, and durable.

ArtFibre is an artificial fibre made of dyed and hardwearing polyethylene. It can withstand the sun's burning UV-rays, heavy rain and even frost. ArtFibre is the material we use for the bindings and weaving of the seat and back of our Affaire café furniture pieces.

The combination of natural rattan and ArtFibre provides flexibility, strength and optimum comfort.

AFFAIRE COLLECTION USED OUTSIDE

Our Affaire café chairs are made of raw natural sustainable rattan and can be used outside in covered areas. The chairs can stand a short shower, but not daily rain, and must be stored inside during winter time.

When used outside the raw natural rattan frame will turn greyish like teak, after a few months use.

We recommend that you clean our Affaire café chairs with a brush and warm water 2-3 times during the summer season to keep the raw natural rattan frame clean from dirt.





ISABELL ARM CHAIR - COLONIAL TABLE



VALÉRIE CHAIR - COLONIAL TABLE







VALERIE CHAIR



SOFIE CHAIR - GEORGE ROUND TABLE







SIMONE STOOL - LUCAS DESK



SIMONE BAR STOOL



SIMONE COUNTER STOOL - SIMONE STOOL



SOFIE CHAIR



ISABELL ARM CHAIR - ISABELL BENCH - COLONIAL TABLE







ISABELL BAR STOOL

MONIQUE ARM CHAIR - NICOLE CAFÉ TABLE







ISABELL CHAIR - DANIELLE DINNING TABLE

CONTRACT BUSINESS

STRONG PARTNER - MORE THAN 75 YEARS

With furniture from Sika-Design you can create a contemporary or classical exterior space with our luxury synthetic rattan exterior furniture.

Sika-Design interior rattan furniture allows you to create an interior space with lightweight but very strong furniture, made from one of the worlds most sustainable materials.

Our collections are designed to live long. Whether it is our contemporary or more classical furniture collections, you are guaranteed continuity and stability.

STACKABLE & COMFORTABLE

Several of our chairs are stackable, making them easy to store away during winter or after a busy day, getting ready for closing time at the café. The Scandinavian minimalist design is suitable everywhere.

The structure of the Artfibre® and the woven seats provide flexibility and optimum comfort.



FINE CRAFTSMANSHIP & MODERN TECHNOLOGY

Sika-Design selects its materials using the strictest criteria in the industry. The factory is a place where experts in handcraft use their expertise and carry out their handiwork with meticulous attention to detail.

Sika-Design work with the finest quality of natural rattan and the newest technology in aluminum – also called AluRattan®.

Sika-Design furniture is designed to withstand everything that nature can throw at it – rain, cold, heat, UV rays and even snow. The factory of Sika-Design is a place of innovation and where everyone involved take pride in their work.

CAFÉ MEDI



CAFÉ MEDI IN NEW YORK

PRODUCT INFORMATION

TABLE TOPS

For our Nicole and Bistro tables we offer a versalite or a teak top. Our teak tops are from reclaimed teak wood.

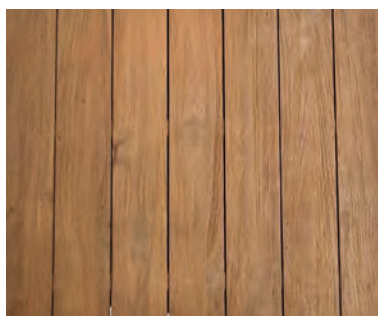


TABLE BASE

Nicole table base is made of aluminum.



UPHOLSTERY & CUSHIONS MANUFACTURED IN DENMARK

The quality of good craftsmanship is also felt in our cushions, where we draw on great experience and expertise when we decide the shape and characteristics of each cushion.

Since the 1950's when Ankjær started his furniture production, we have developed customized cushions for all our models in our own facilities in Denmark.

Our high-quality upholstery and seat cushions are made to order and can be chosen from a broad variety of high quality fabrics and styles – even your own choice.

COLOURS

We offer to produce our models in your combination of colours. Be aware of minimum quantities and time of delivery.

The frame is always rattan natural. See page 30-31 for standard models in stock.



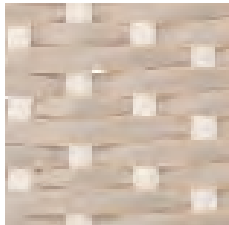
White w/cappuccino dot
CPWH



Ivory
IVIV



Cappuccino w/ white dot
WHCP



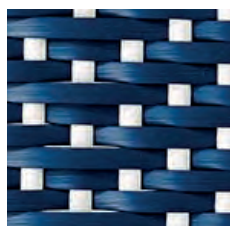
Grey w/white dot
WHGR



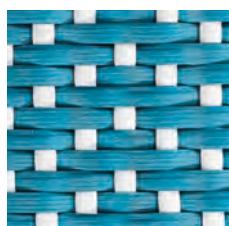
Salvie green w/white dot
WHSG



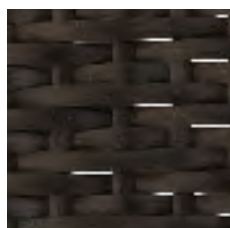
Lime green w/white dot
WHLI



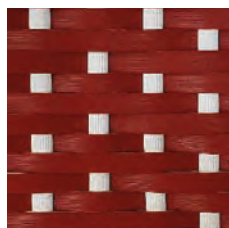
Navy blue w/white dot
WHLU



Aqua blue
WHAQ



Black
BLBL



Burgundy red
WHBR



WH - White



IV - Ivory



GR - Grey



LG - Lime green



SG - Salvie green



AQ - Aqua blue



LU - Navy blue



BL - Black



CP - Cappuccino



BG - Burgundy red



SOFIE CHAIR - 9166WHGR
W50 D56 H89 SH45



SOFIE CHAIR - 9166WHSB
W50 D56 H89 SH45



SOFIE CHAIR - 9166WHLU
W50 D56 H89 SH45



SOFIE CHAIR - 9166BLBL
W50 D56 H89 SH45



MADELEINE CHAIR - 9187CPWH
W60 D62 H80 SH45 AH68



MADELEINE CHAIR - 9187WHCP
W60 D62 H80 SH45 AH68



VALERIE CHAIR - 9176IVIV
W55 D57 H82 SH45 AH67



VALERIE CHAIR - 9176WHLI
W55 D57 H82 SH45 AH67



ISABELL CHAIR - 9180CPWH
W48 D59 H92 SH45



ISABELL CHAIR - 9180WHCP
W48 D59 H92 SH45



ISABELL ARM CHAIR - 9181CPWH
W54 D57 H92 SH45 AH64



ISABELL ARM CHAIR - 9181WHCP
W54 D57 H92 SH45 AH64



ISABELL ARM CHAIR - 9181WHBR
W54 D57 H92 SH45 AH64



ISABELL BAR STOOL - 9178CPWH
W55 D55 H122 SH76 AH93



ISABELL BAR STOOL - 9178WHCP
W55 D55 H122 SH76 AH93



MONIQUE CHAIR - 9185CPWH
W54 D62 H93 SH46



MONIQUE ARM CHAIR - 9186CPWH
W54 D62 H93 SH46 AH65



ISABELL BENCH - 9281CPWH
W162 D55 H91 SH45 AH64



ISABELL BENCH - 9281WHCP
W162 D55 H91 SH45 AH64



SIMONE STOOL
9182CPWH - Ø40 SH45



SIMONE COUNTER STOOL
9183CPWH - Ø40 SH68



SIMONE BAR STOOL
9184CPWH - Ø40 SH78



SIMONE STOOL
9182WHCP - Ø40 SH45



SIMONE COUNTER STOOL
9183WHCP - Ø40 SH68



SIMONE BAR STOOL
9184WHCP - Ø40 SH78



SIMONE STOOL
9182BLBL - Ø40 SH45



SIMONE COUNTER STOOL
9183BLBL - Ø40 SH68



SIMONE BAR STOOL
9184BLBL - Ø40 SH78

STACKABLE



DANIELLE DINING TABLE
9482CPWH - Ø120 H70



DANIELLE CAFÉ TABLE
9481CPWH - Ø80 H70



DANIELLE SIDE TABLE
9485CPWH - Ø60 H50



DANIELLE DINING TABLE
9482WHCP - Ø120 H70



DANIELLE CAFÉ TABLE
9481WHCP - Ø80 H70



DANIELLE SIDE TABLE
9485WHCP - Ø60 H50

TEAK ITEMS

Our teak items are made of old reclaimed teakwood. It can be from old houses, old fisher boats or old rail road supports. The wood will appear with reparations and fillings. Teak tables used outside will after a few weeks change into a beautiful silvery grey color.



LUCAS CONSOLE
9471D - L140 D40 H90



LUCAS DESK
9470D - L110 D60 H73



CHARLES COUNTER STOOL
1054D - W50 H68 D40 SH66



CHARLES STOOL
1053D - W56 H49 D36 SH47



GEORGE EXT. TABLE
9480U - L200(280) D100 H72,5



GEORGE TABLE
9440U - L240 D100 H72,5



GEORGE BENCH
9240U - L220 D40 H45



COLONIAL TABLE
9475U - L200 D100 H72,5



COLONIAL TABLE
9460U - L160 D100 H72,5



GEORGE ROUND TABLE
9446U - Ø160 H72



GEORGE ROUND TABLE
9442U - Ø120 H72



NICOLE CAFÉ TABLE
9484BL - W70 D70 H74



NICOLE CAFÉ TABLE
9484BL - Ø80 H74



NICOLE CAFÉ TABLE
9484WH - W70 D70 H74



NICOLE CAFÉ TABLE
9484WH - Ø80 H74



NICOLE BAR TABLE
9488WH - Ø80 H105



Sika-Design
Rynkebyvej 245
DK-5350 Rynkeby
Denmark
Phone: +45 6615 4224
info@sika-design.com
www.sika-design.com

