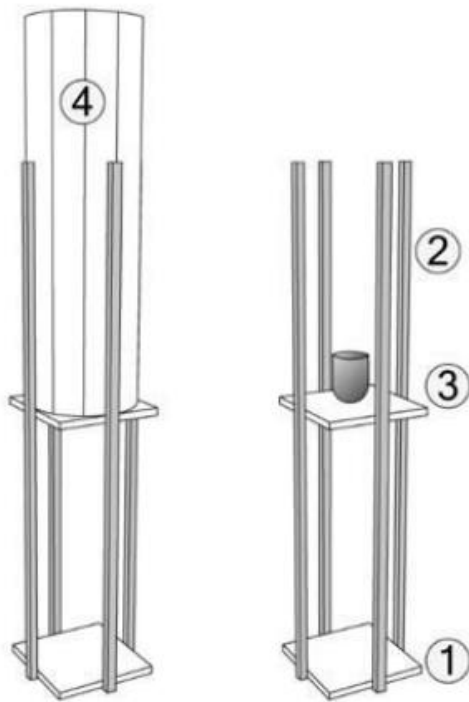
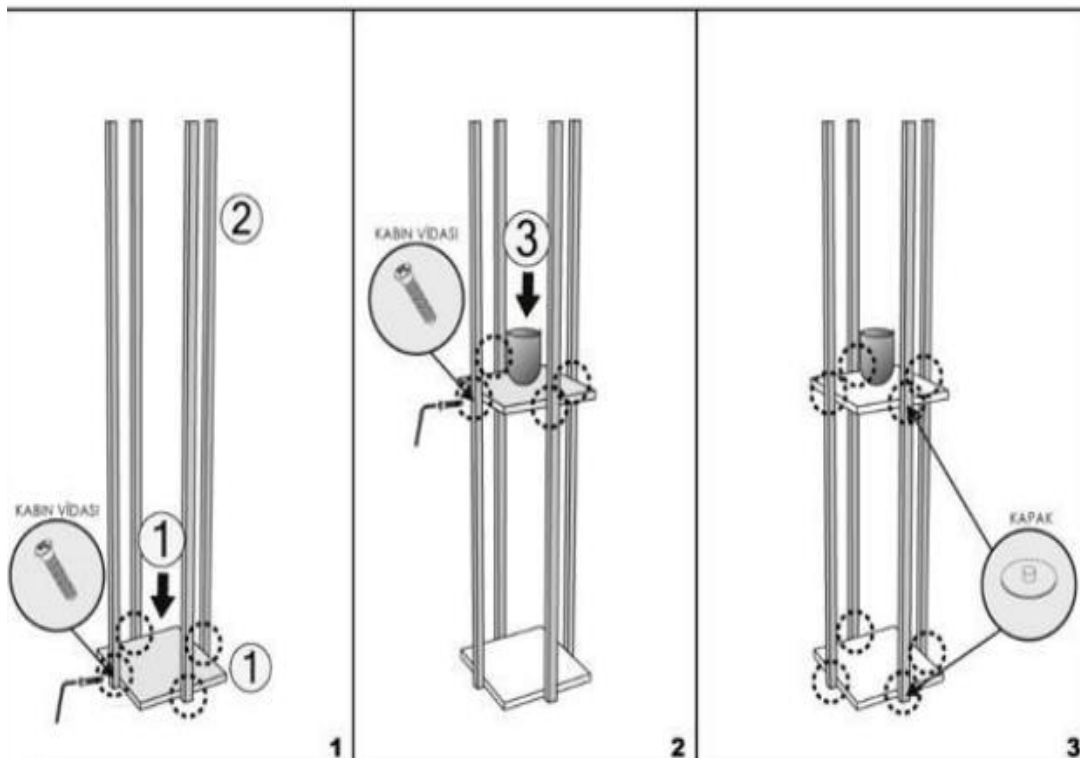


390FLH1151 / MANUAL INSTRUCTION

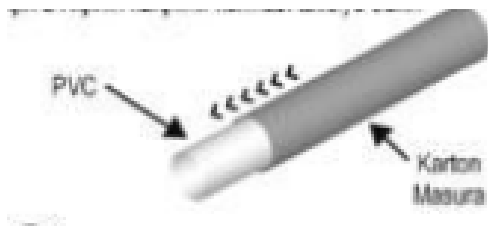
1.



2.

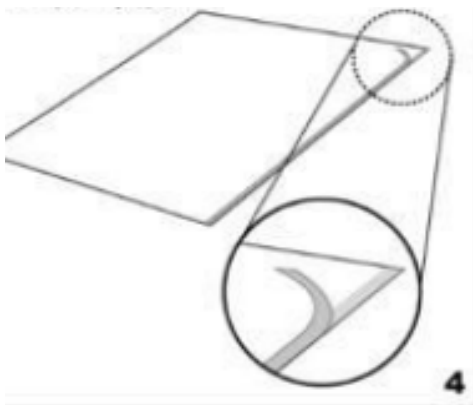


3.



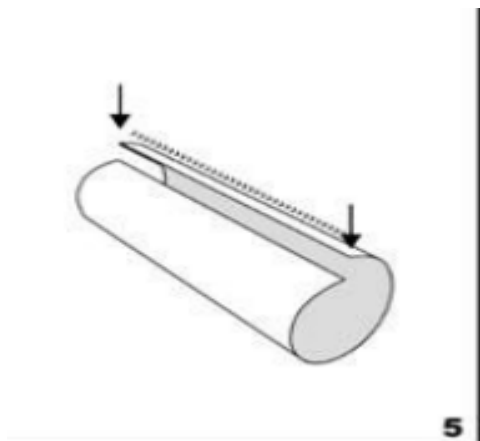
To turn PVC foil into a cylinder lampshade, 2 people need to assemble the product mutually.

4.



Unfold the PVC foil on a table. Remove the double-sided tape.

5. Attach the PVC foil from both ends to form a cylindrical pipe, with 2 people facing each other, 1 centimeter from each other, in line with the tape, and carefully paste it from end to end. Push the PVC from the front with your finger to ensure that it adheres strongly.



- 6.** Place the cylindrical PVC into the middle space of the floor lamp.

