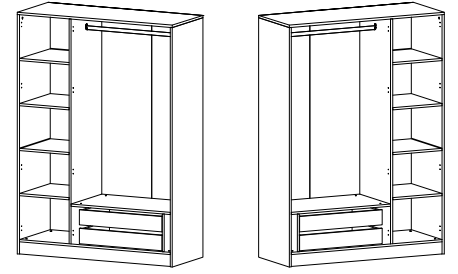


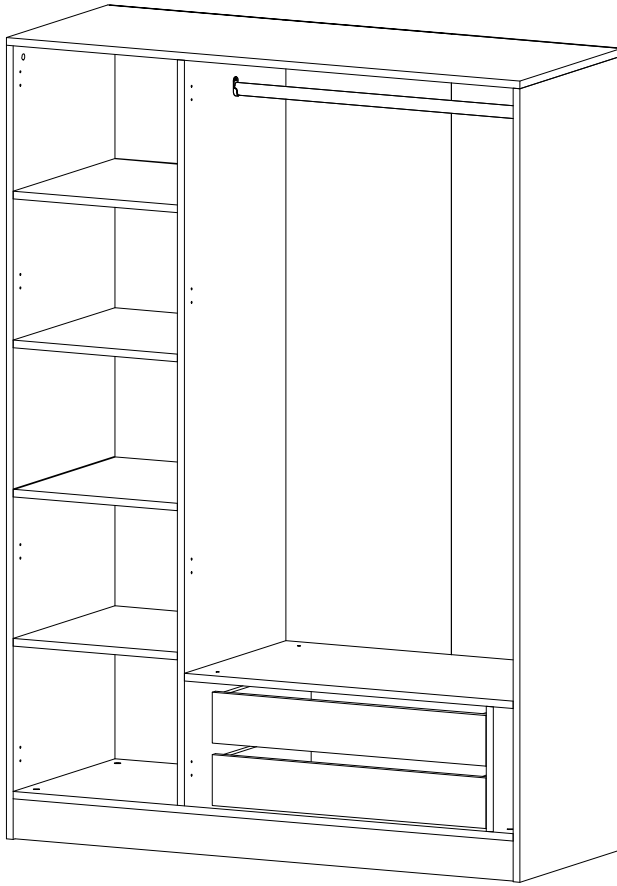
BEYAZ

# KALE

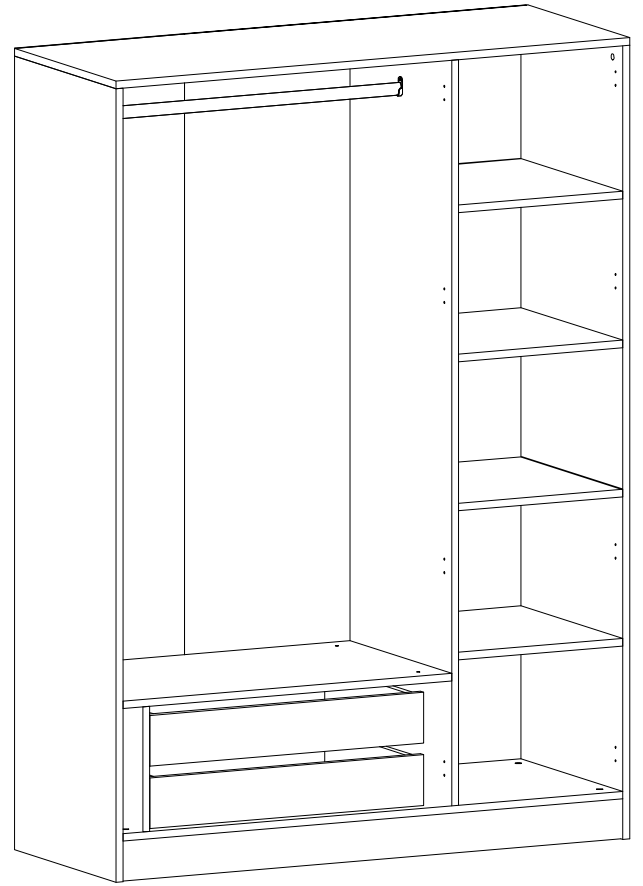
GÖVDE 3K 190CM+210CM ORTAK



## V1



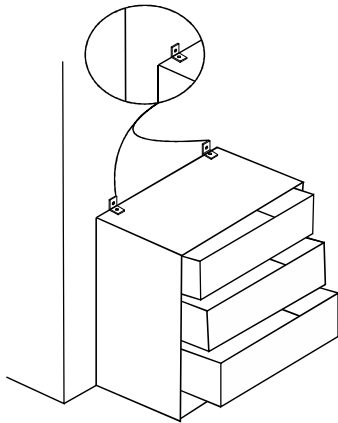
## V2



Dear Customer,

We design and produce our products for people to love and have fun with them as we do.

The product you bought was subjected to all sorts of tests and control before sending out to you.



**Attention!**

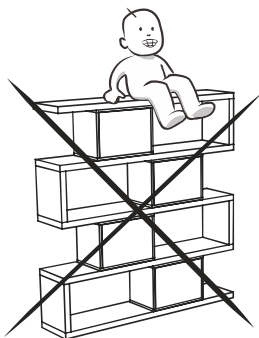
Using excessive force to the furniture can cause furniture to fall. This can damage you both financially and physically. In order to avoid this situation, please use wall mounting fixtures.



Before start assembling, please check the whole components and accessories according to the lists. If you bought more than one product, to prevent confusion be sure that you completed the first product. Then start the other product's assembling.



Before start assembling, please clean all the components with a damp cloth. Also for usual cleaning, this will be enough.




Do not use your furniture for out of purposes. If you would like to use it, please contact us for further questions.

Do not directly contact your furniture with excessive heat, cold and humidity because the product can be affected..

# ACCESSORY LIST

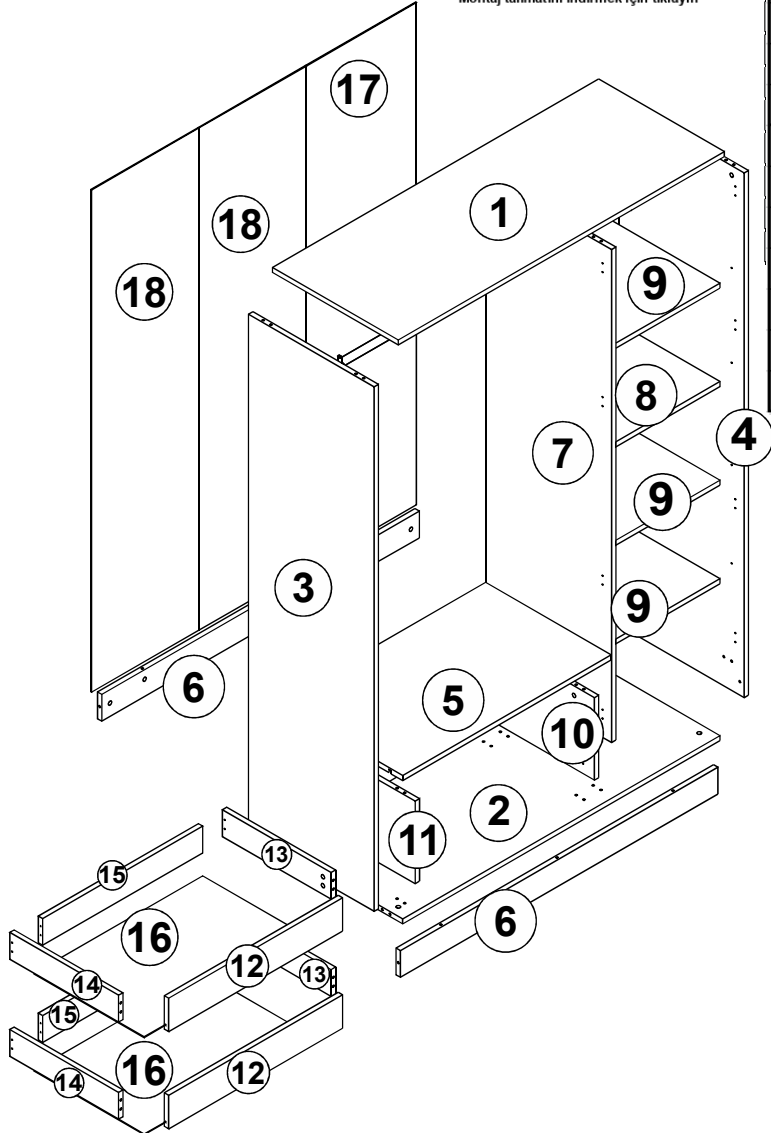
KALE GÖVDE 3K 190+210 BEYAZ

<b>A23</b> Minifix M10 34x	<b>A22</b> Minifix G18 34x	<b>A06</b> 18 mm BYZ 28x	<b>A04</b> KVLY 24x	<b>A17</b> 4x50 8x
<b>C01</b> DM 12x	<b>C04</b> MA 12x	<b>R05</b> CRY 45 cm 2x	<b>A24</b> FLNS 2x	<b>A55</b> AB 856 mm 1x
<b>V10</b> RFX 20x14 8x	<b>V11</b> RFX VD 5x13 8x	<b>A18</b> 3,5x18 68x	<b>A48</b> AC 60x	<b>A65</b> RP 12x
<b>A64</b> "H"ARKLK CTS 1x	<p>M.M.01.03.48.05253 Minar Kale 6 Kapaklı 2 Aynalı 4 Ç Dolap Ve Yüklük Beyaz Antrasit 755CM</p>  <p>Montaj talimatını indirmek için tıklayın</p>			

ÇİTA 190 - 1764mm  
ÇİTA 210 - 1964mm

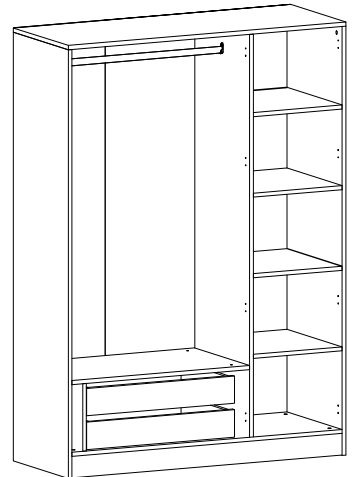
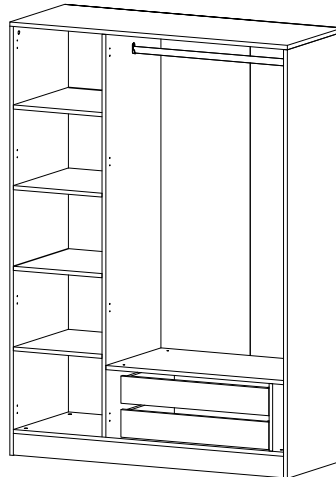
## GENERAL VIEW

KALE 3		190 LİK	210 LUK	
3	1	1880	520	2080
4	1	1880	520	2080
17	1	1800	455	2000
18	2	1800	443	2000
5	1	864	520	864
7	1	1766	520	1966
8	1	432	520	432
9	3	432	520	432
10	1	296	520	296
11	1	296	520	296
16	2	698	456	698
1	1	1350	520	1350
2	1	1314	520	1314
6	2	1314	96	1314
12	2	720	120	720
13	2	450	96	450
14	2	450	96	450
15	2	662	96	662



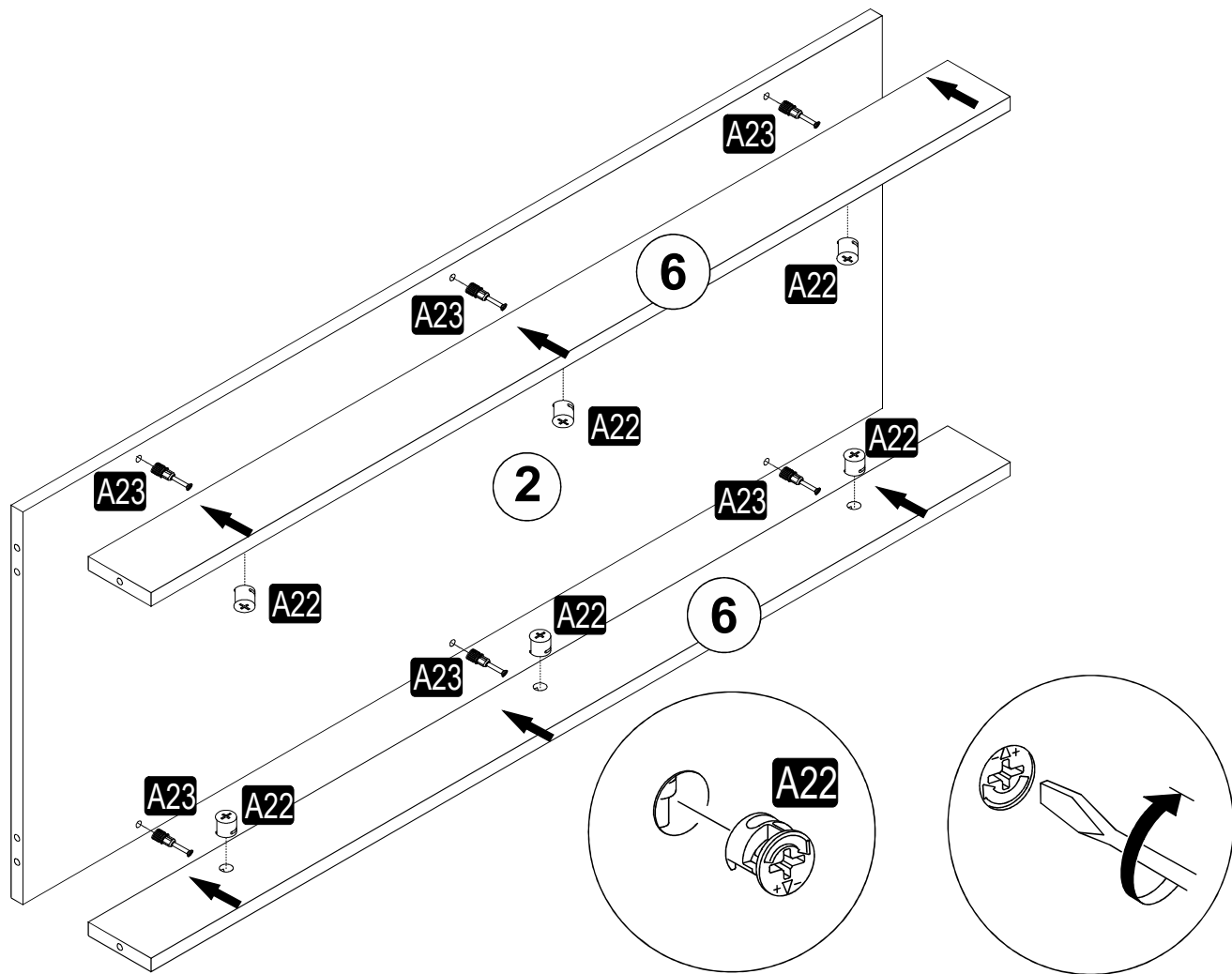
V1

V2

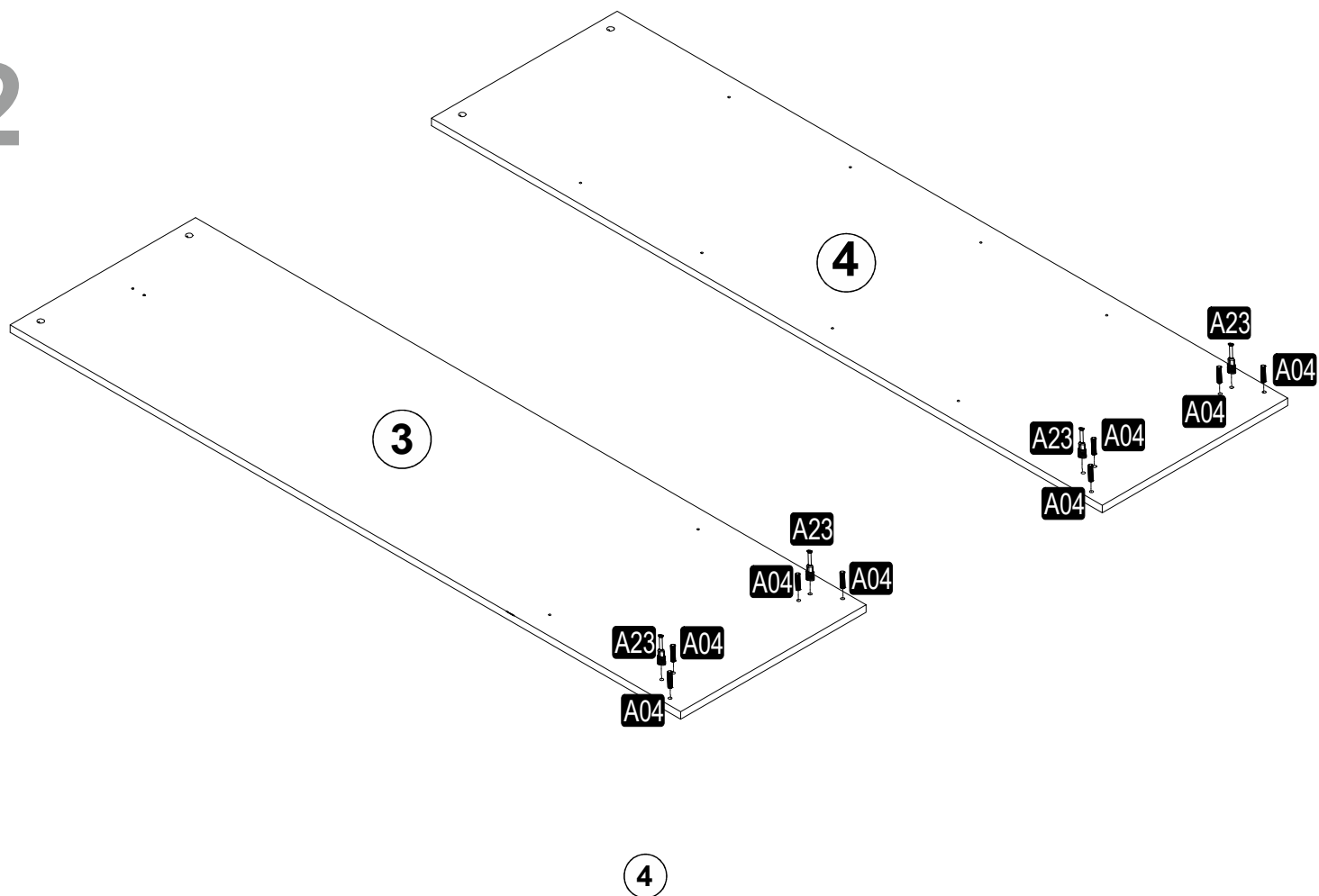


3

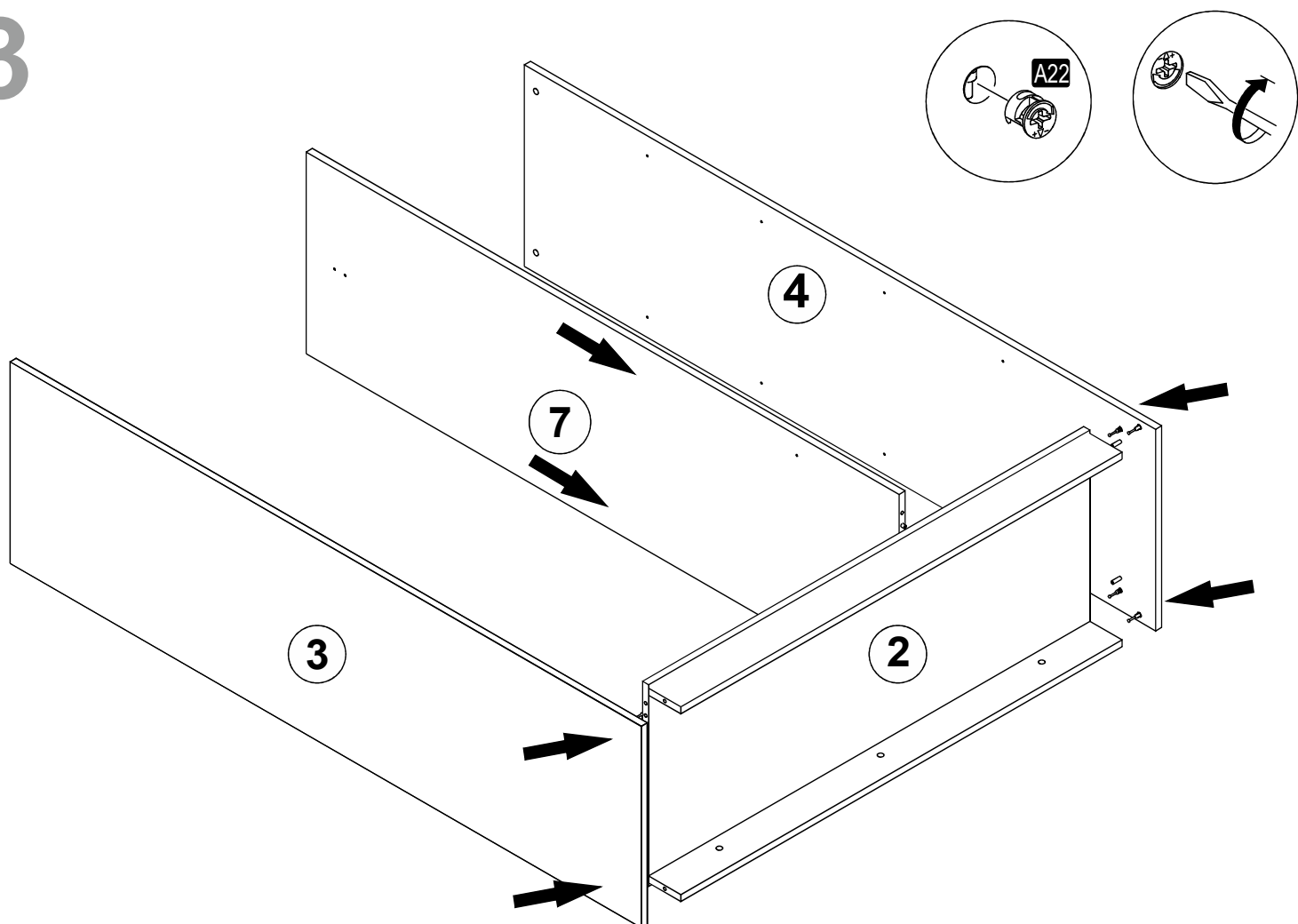
# 1



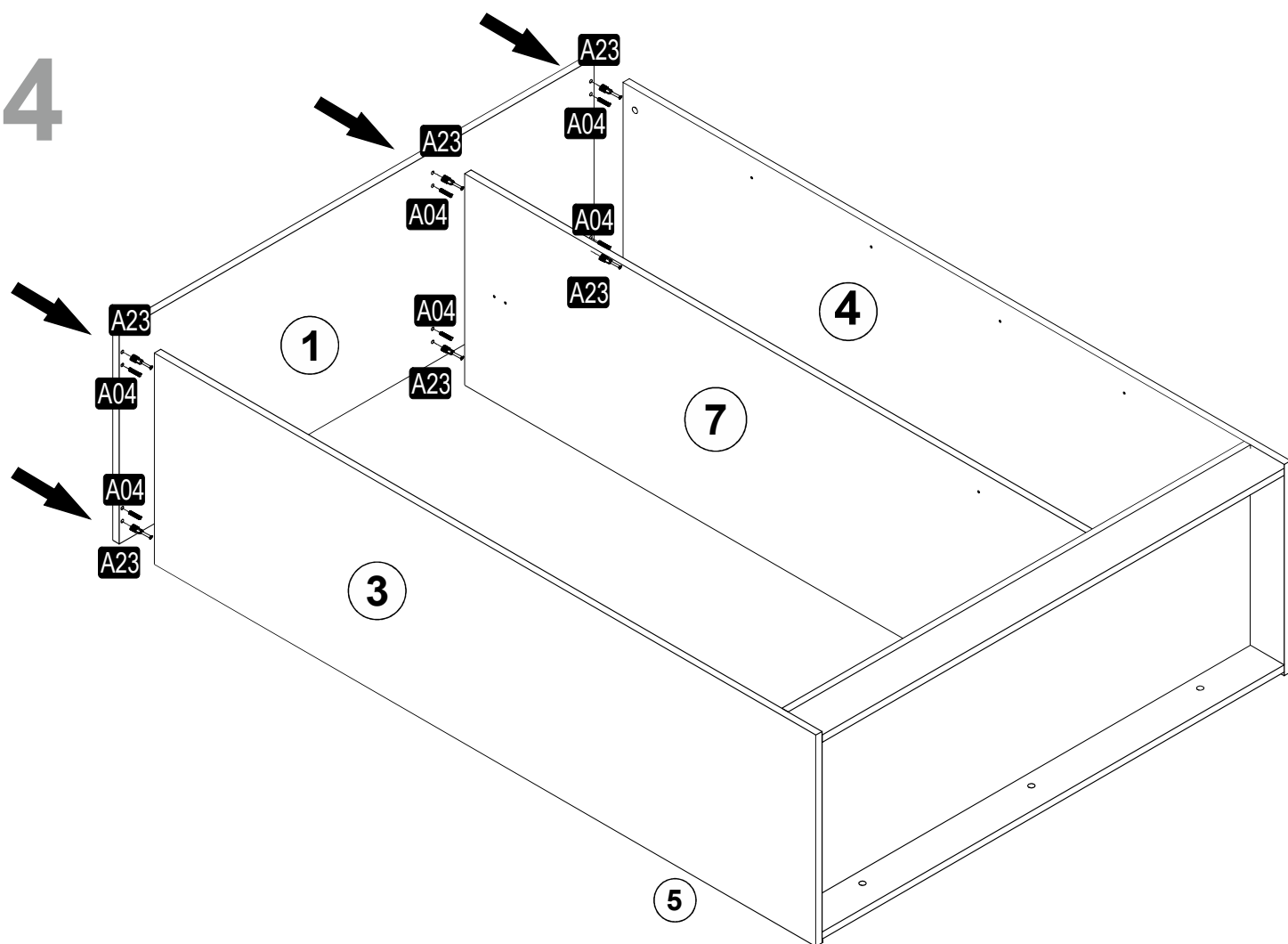
# 2



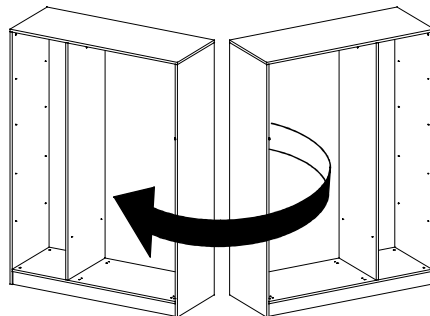
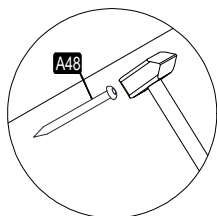
3



4



5

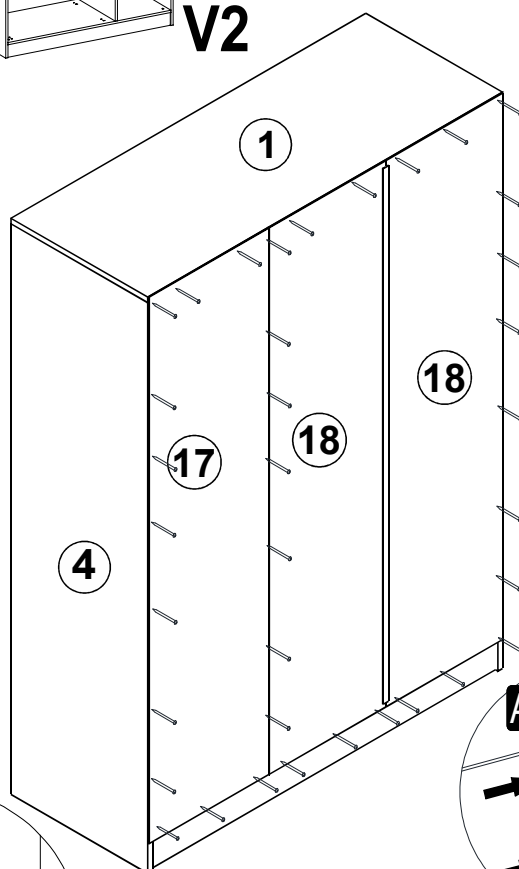
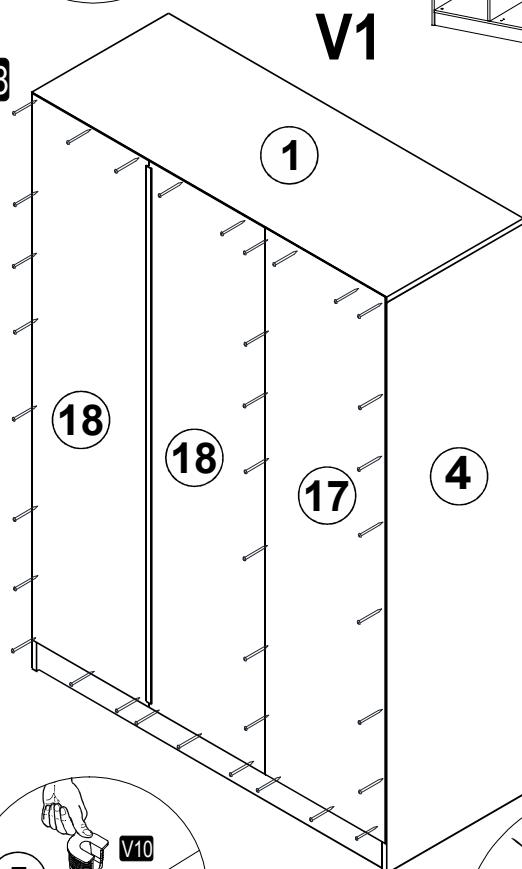


V1

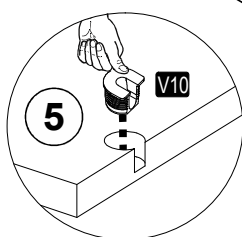
V2

A48

A48

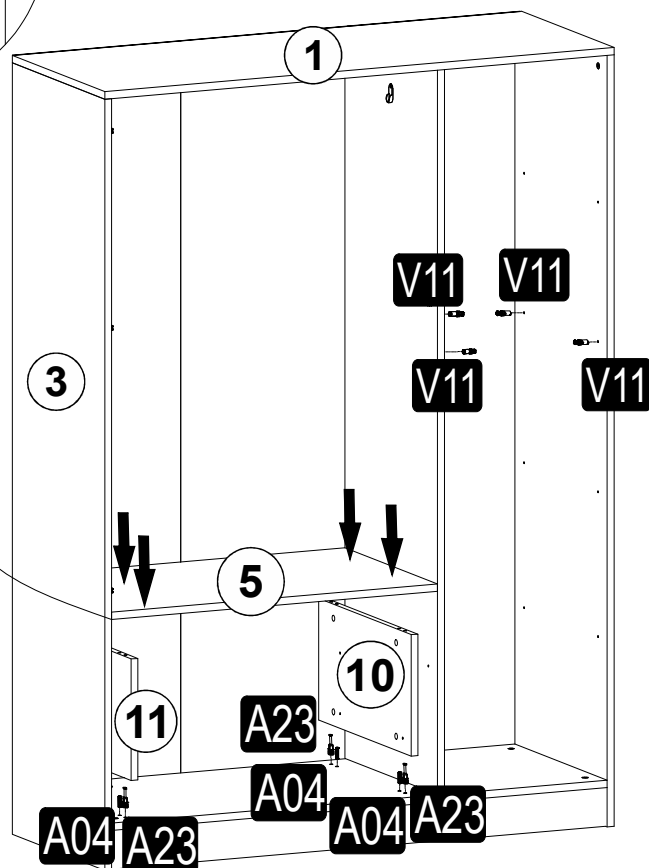
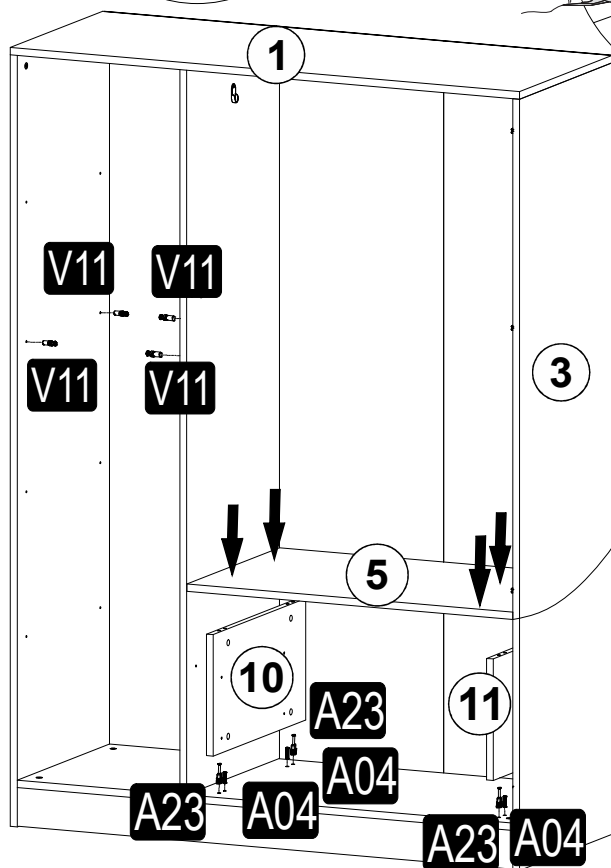
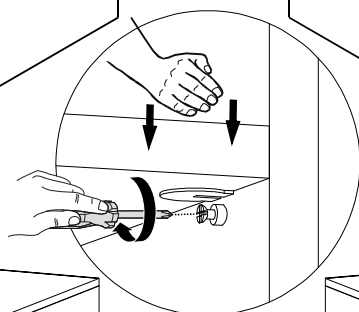
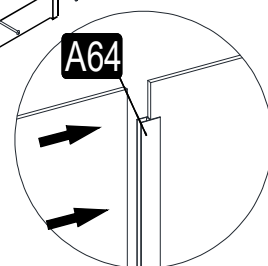


6



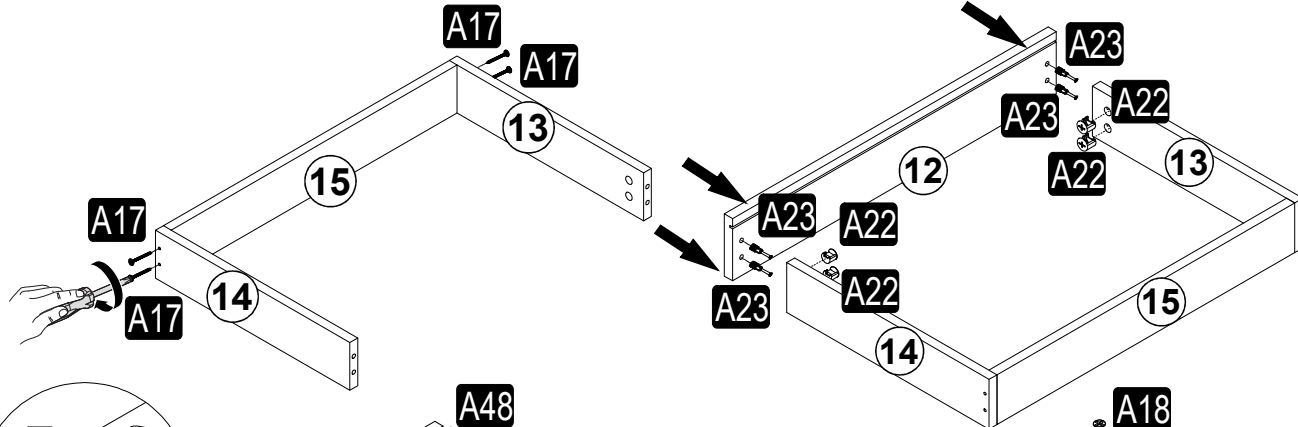
V1

V2

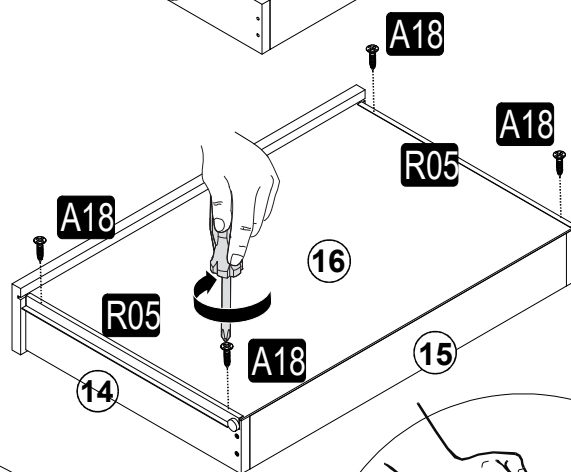
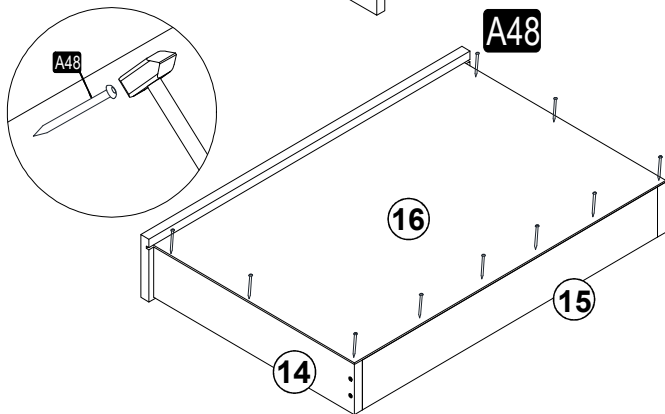


6

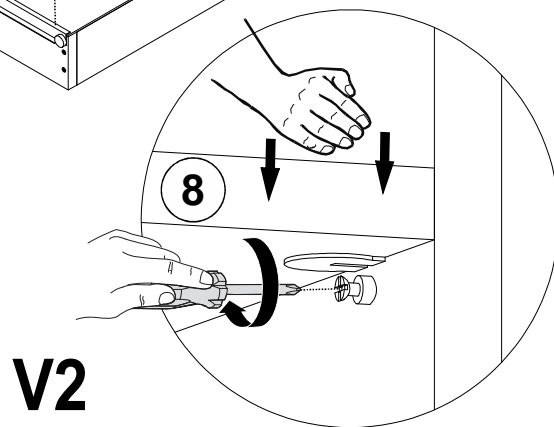
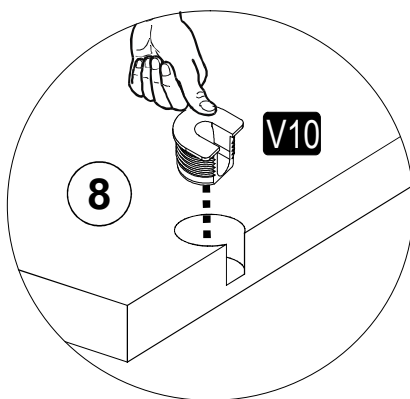
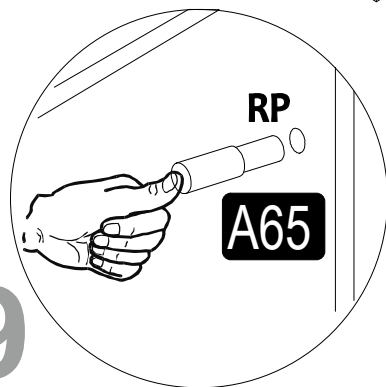
7



8

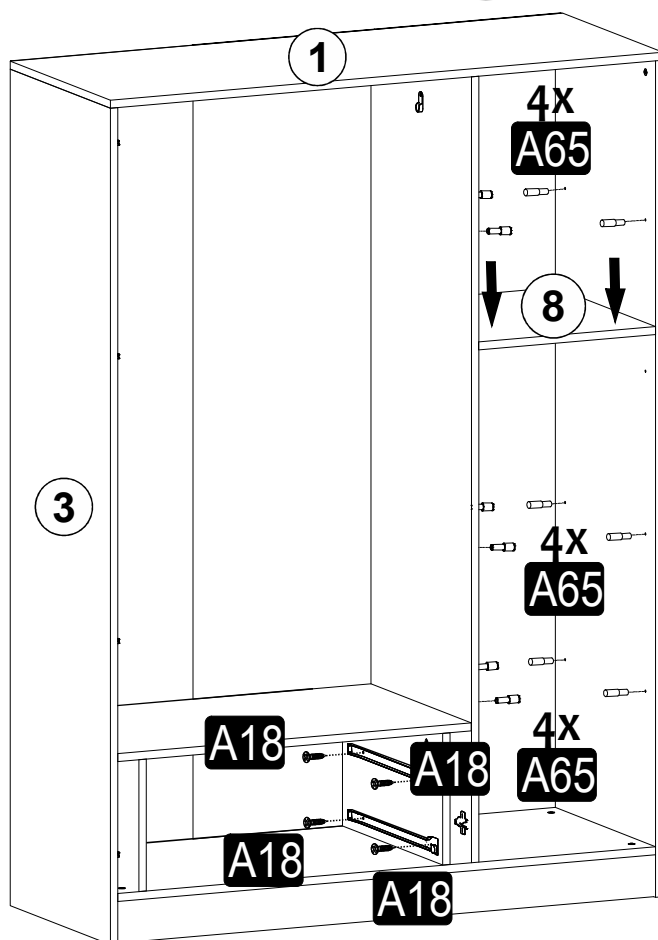
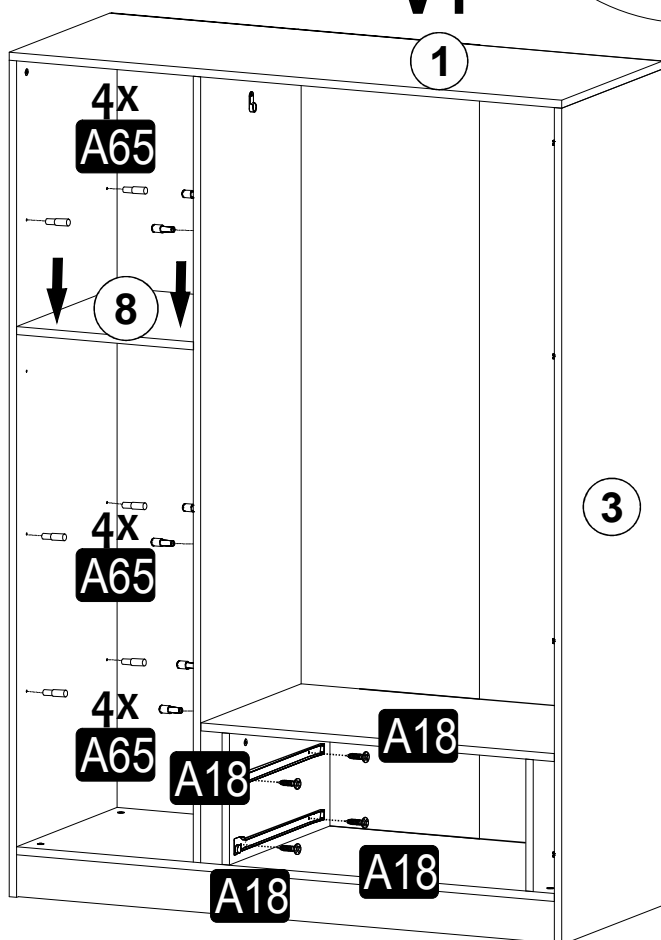


9



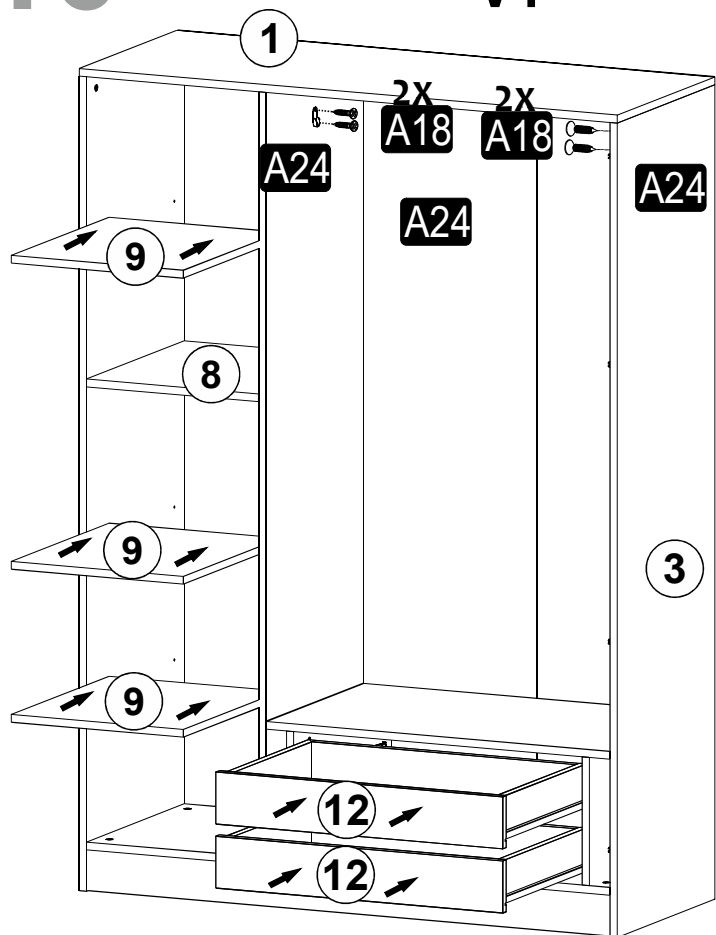
V1

V2

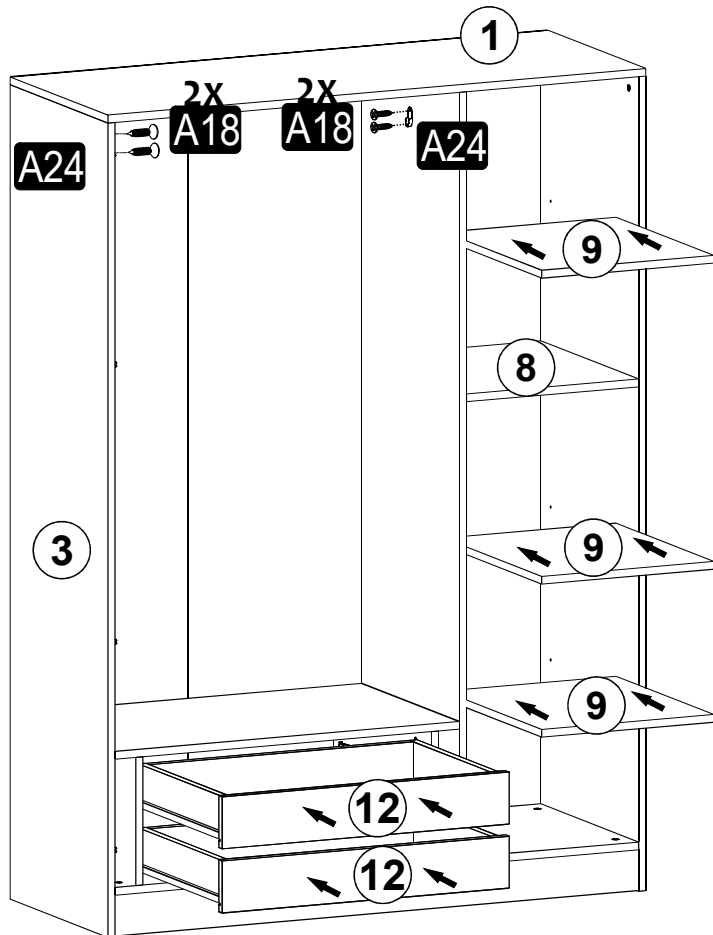


# 10

## V1



## V2



# 11

